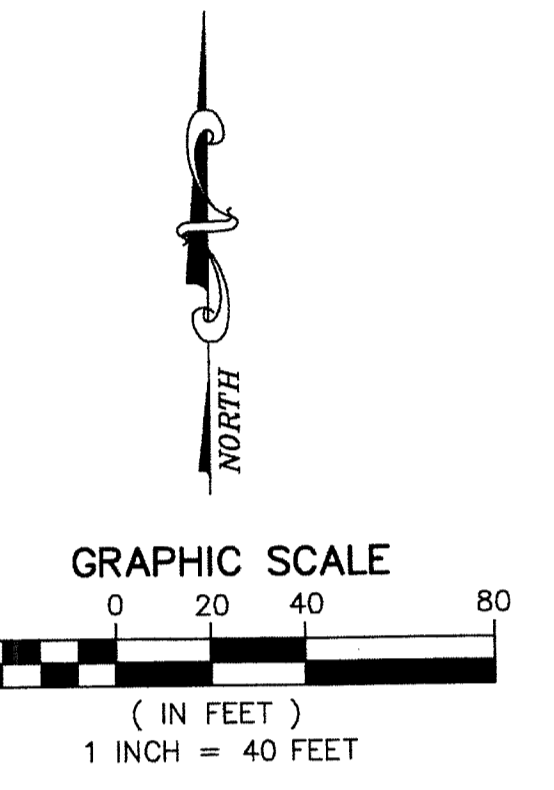


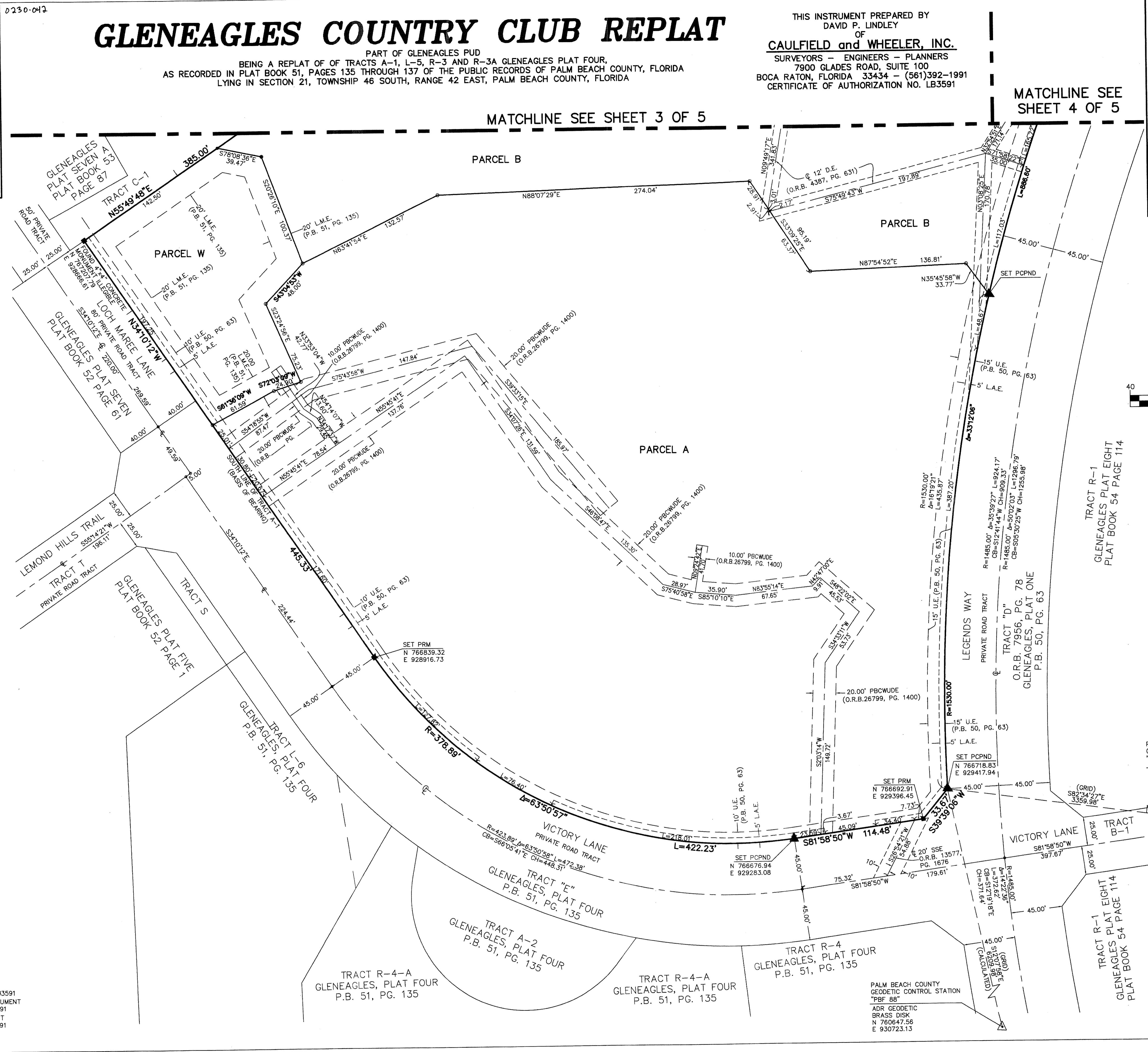
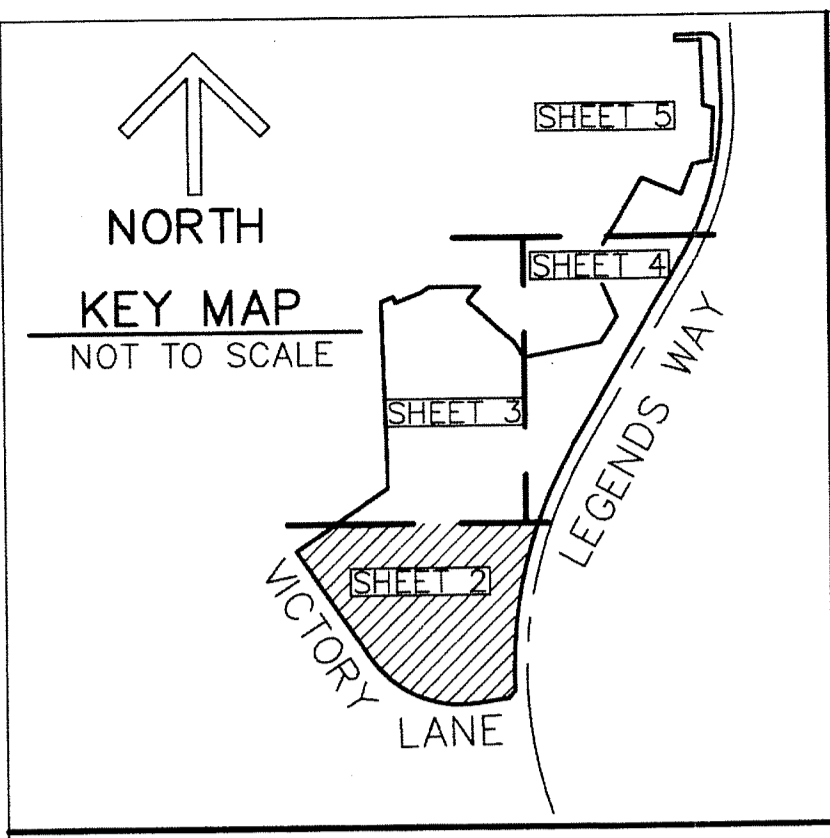
STATE OF FLORIDA
COUNTY OF PALM BEACH
THIS PLAT WAS FILED FOR
RECORD AT _____ M.
THIS _____ DAY OF _____
A.D. 201____ AND DULY RECORDED
IN PLAT BOOK _____ ON
PAGES _____ AND _____
SHARON R. BOCK
CLERK AND COMPTROLLER
BY: _____
DEPUTY CLERK



GLENEAGLES COUNTRY CLUB REPLAT

PART OF GLENEAGLES PUD
BEING A REPLAT OF OF TRACTS A-1, L-5, R-3 AND R-3A GLENEAGLES PLAT FOUR,
AS RECORDED IN PLAT BOOK 51, PAGES 135 THROUGH 137 OF THE PUBLIC RECORDS OF PALM BEACH COUNTY, FLORIDA
LYING IN SECTION 21, TOWNSHIP 46 SOUTH, RANGE 42 EAST, PALM BEACH COUNTY, FLORIDA

THIS INSTRUMENT PREPARED BY
DAVID P. LINDLEY
OF
CAULFIELD and WHEELER, INC.
SURVEYORS - ENGINEERS - PLANNERS
7900 GLADES ROAD, SUITE 100
BOCA RATON, FLORIDA 33434 - (561)392-1991
CERTIFICATE OF AUTHORIZATION NO. LB3591



NOTES
COORDINATES, BEARINGS AND DISTANCES
COORDINATES SHOWN ARE GRID
DATUM = NAD 83 1990 ADJUSTMENT
ZONE = FLORIDA EAST
LINEAR UNIT = US SURVEY FEET
COORDINATE SYSTEM 1983 STATE PLANE
TRANSVERSE MERCATOR PROJECTION
ALL DISTANCES ARE GROUND UNLESS OTHERWISE NOTED
SCALE FACTOR = 1.0000271
GROUND DISTANCE X SCALE FACTOR = GRID DISTANCE
BEARINGS AS SHOWN HEREON ARE GRID DATUM,
NAD 83 1990 ADJUSTMENT, FLORIDA EAST ZONE.

LEGEND/ABBREVIATIONS
C - CENTERLINE
Δ - DELTA (CENTRAL ANGLE)
BE - BUFFER EASEMENT
D.E. - DRAINAGE EASEMENT
E - EASING
L - ARC LENGTH
L.A.E. - LIMITED ACCESS EASEMENT
LB - LICENSED BUSINESS
L.M.E. - LAKE MAINTENANCE EASEMENT
N - NORTHING
O.R.B. - OFFICIAL RECORD BOOK
PBCWUDE - PALM BEACH COUNTY WATER UTILITIES DEPARTMENT EASEMENT
PBC - PALM BEACH COUNTY
R - RADIUS
(R) - INDICATES RADIAL LINE
SSE - SANITARY SEWER EASEMENT
U.E. - UTILITY EASEMENT
P.B. - PLAT BOOK
PG. - PAGE
○ - DENOTES SET 5/8" IRON ROD & CAP LB #3591
■ - PRM - DENOTES SET PERMANENT REFERENCE MONUMENT
4" x 4" x 24" CONCRETE MONUMENT LB #3591
▲ - PRMND - DENOTES PERMANENT REFERENCE MONUMENT SET NAIL AND DISK STAMPED "PRM" LB 3591

PALM BEACH COUNTY
GEODETIC CONTROL STATION
"PBF 88"
ADR GEODETIC
BRASS DISK
N 760647.56
E 930723.13

PALM BEACH COUNTY
GEODETIC CONTROL STATION
"KING"
PALM BEACH COUNTY
BRASS DISK
N 766284.58
E 932749.73
PBC PUBLISHED VALUE